

# Bushfire Code Compliant Range

Roof mounted fans for domestic and commercial buildings



## Complies with the Australian Standard

Many parts of our country experience severe bushfire threat, particularly during the hot summer months.

These bushfires are capable of destroying most buildings with hot burning embers that enter through openings in the building structure, such as roof ventilations.

Based on existing products, Fantech have developed a range of roof mounted ventilators that comply with the Australian standard "AS3959:1999 Construction of buildings in bush fire prone areas"

This range includes the GL Gamma, Ezifit Thru Roof, Alpha Relief Air Vent and New Generation Supply Air fans.



**FANTECH**

[www.fantech.com.au](http://www.fantech.com.au)

# Bushfire Code Compliant Range

Fantech have redeveloped four existing high performance roof ventilators so they comply with the Bushfire Code and at the same time ensuring that the necessary design modifications do not reduce the overall performance of the original product.

All models can be mounted at angles up to 30° and can be powder coated in various colours at an additional cost.

The Fantech Bushfire Code Compliant range consists of:

## GL Gamma BFC Series

These fans are designed for use in commercial kitchen exhaust systems and other applications requiring the combination of speed-controllable motors with all metal construction.

- Easy to remove wind band makes cleaning and maintenance easy
- Includes backward-curved centrifugal impeller
- Available in 310mm to 710mm fan diameters

## Ezifit Thru Roof BFC Series

Specifically developed to meet the airflow requirements of bathrooms, toilets, range hoods and small commercial applications.

- Connection lead with 3 pin plug fitted
- Available in 150mm and 200mm fan diameters

## Alpha Relief Air Vents BFC Series

These units will enable design engineers to control relief air and the pressures within buildings to meet the requirements of the installation.

- Models to fit upstands from □260mm to □980mm

## New Generation Series of BFC axial roof supply air units

Fitted with adjustable pitch impellers enabling a wide performance range to be obtained from any one unit.

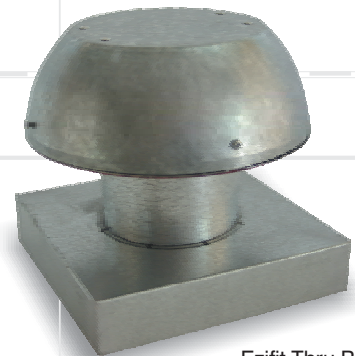
- Wide range of capacities and motors
- Can be ordered with GRP or aluminium impeller blades
- Available in 310mm to 710mm fan diameters

**Construction of buildings in bushfire prone areas AS3959:1999 clause 3.8 "Roof Ventilators" states; All components of roof ventilators in a level 1 construction shall be constructed of non-combustible material and shall be sealed against entry of sparks with corrosion resistant steel or bronze mesh having a maximum aperture size of 1.8mm.**

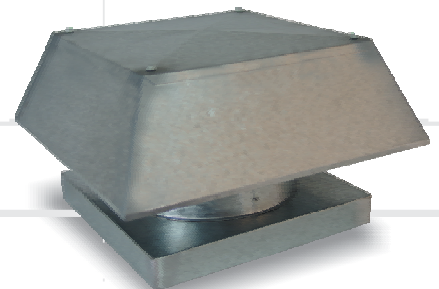
For full specifications and technical data visit [www.fantech.com.au](http://www.fantech.com.au) or contact your nearest Fantech distributor.



GL Gamma BFC



Ezifit Thru Roof BFC



Alpha Relief Air Vent BFC



New Generation BFC



## Fantech Pty. Ltd.

Victoria: (+61 3) 8545 2345  
New South Wales: (02) 8811 0400  
South Australia: (08) 8294 0530  
Queensland: (07) 3299 9888  
West. Australia: (08) 9209 4999  
A.C.T.: (02) 6280 5511  
New Zealand: (09) 444 6266  
South East Asia: (+603) 5121 4453

For sales enquiries contact:

Specifications and design subject to change without notice.  
Roof image supplied by Lidoran Roofing Pty Ltd.

BRO-FAN0008: 04/08